



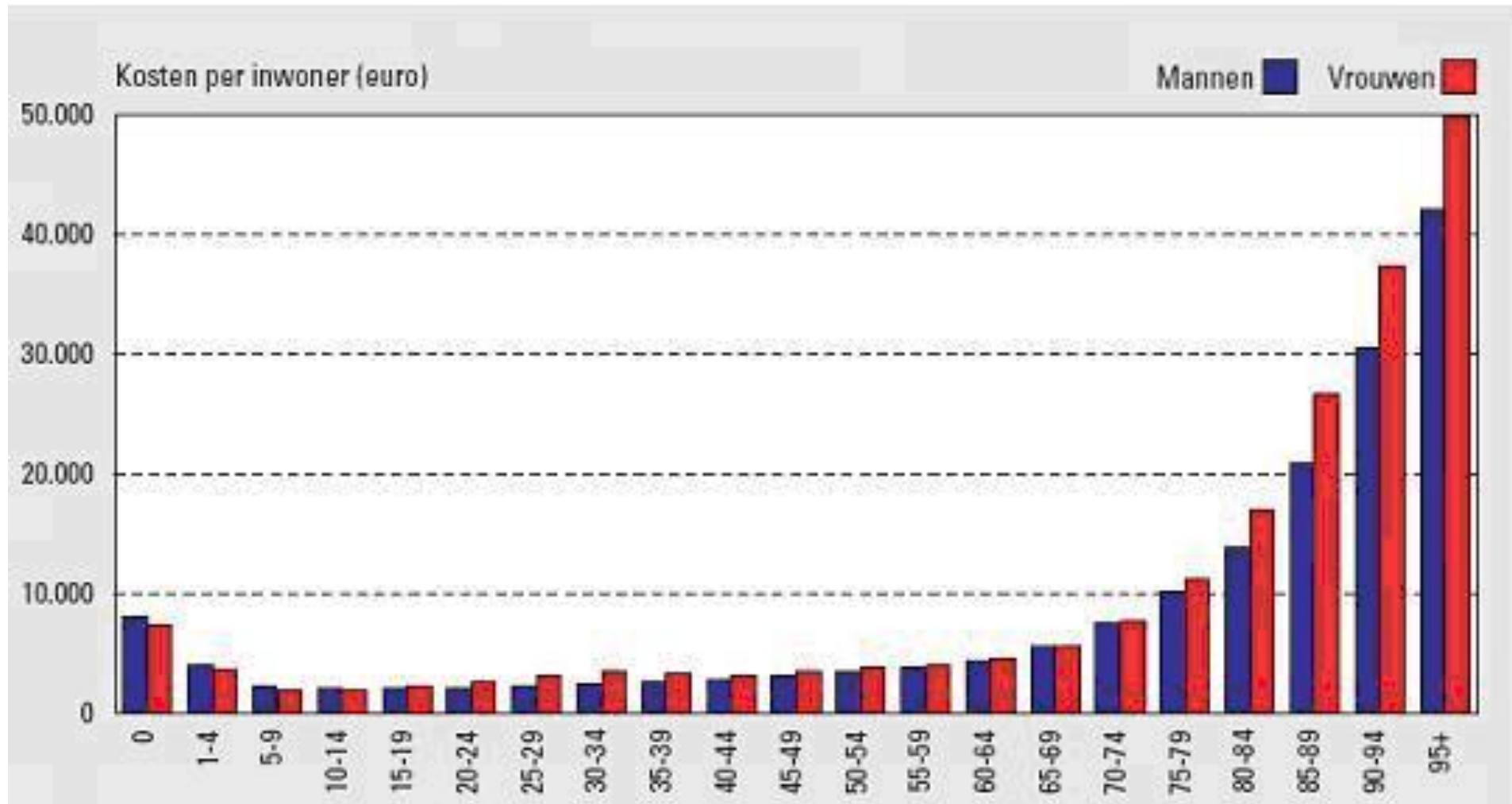
Telemedicine als best practice

Leonard Witkamp – Directeur KSYOS TeleMedisch Centrum

TeleMed 2010

5 november 2010

Zorgkosten in Nederland (CBS 2005)



KSYOS TeleMedisch Centrum: 10 jaar

- 2000: KSYOS Health Management Research (onderzoek)
- 2005: Instelling voor Medisch Specialistische Zorg
- Meerdere TeleConsultatie diensten toegepast in dagelijkse praktijk



KSYOS TeleMedisch Centrum

- TeleConsultatie toegepast in reguliere zorgprocessen
- > 3.000 huisartsen, > 500 medisch specialisten en paramedici
- > 50.000 TeleConsulten
- > 20.000 TeleScreenings
- Vergoeding (per TeleConsult) door zorgverzekeraars
- Samenwerkingscontracten met zorggroepen en derden

Virtuele zorginstelling



Resultaten KSYOS TeleDermatologie

- Reductie van verwijzingen 75%
- Kostenbesparing 20 – 40% (voorzichtige meting)
- Antwoorttijd gemiddeld 4.6 uur
- Huisarts en dermatoloog: (zeer) positief
- Geen drempelverlagend effect
- Serviceverbetering voor patiënt (geen wachttijd)
- Huisartsen: 88% (groot) leereffect

Selectie en uitleg door huisarts



LETTERS TO THE EDITOR

Teledermatology integrated in the Dutch national healthcare system

Editor

Teledermatology (TD), since its introduction in 1995,^{1,2} has been subject of many studies and review articles. A recent review³ stated that ‘until now, there is no country which has implemented TD within their national health system’. This holds true when evaluating publications in scientific press. However, TD has been successfully integrated in the Dutch healthcare system on a large scale.

KSYOS TeleMedical Centre is the first state-certified institution

relationship between GPs and dermatologists in the region and this interaction is experienced as educational.

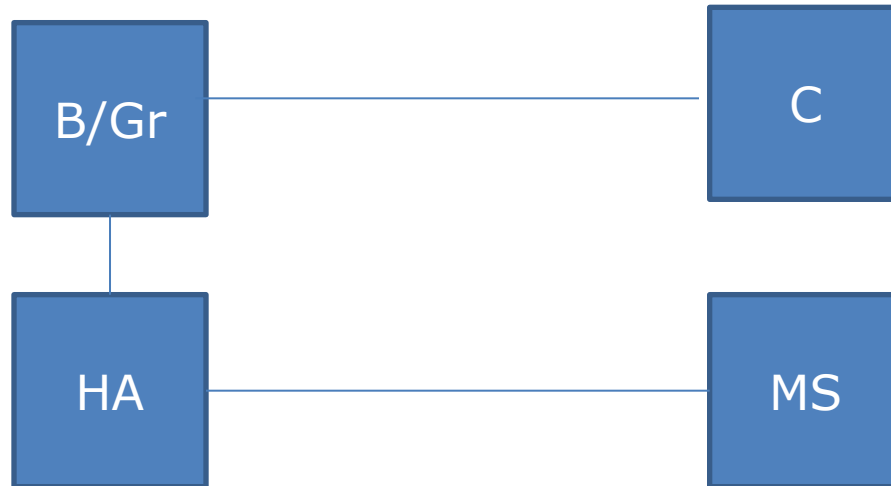
5 Teledermatology is convenient. The store-and-forward design allows the GP and the dermatologists to handle a teleconsultation at the best-suited time in the day. Cameras, software, training and help service are provided by the telemedicine institution.

PhD research in TD in The Netherlands clearly indicates improvement of triage at the GP level through prevention of physical referrals to the dermatologist and the detection of critical cases that might not have been referred by the GP without TD. Thus, the care provider most suitable for the severity of the patient’s condition treats patients. Preliminary data based on 26 788 teleconsultations describe a reduction of 67% of the physical referrals to the dermatologist in the patient group preselected for TD by

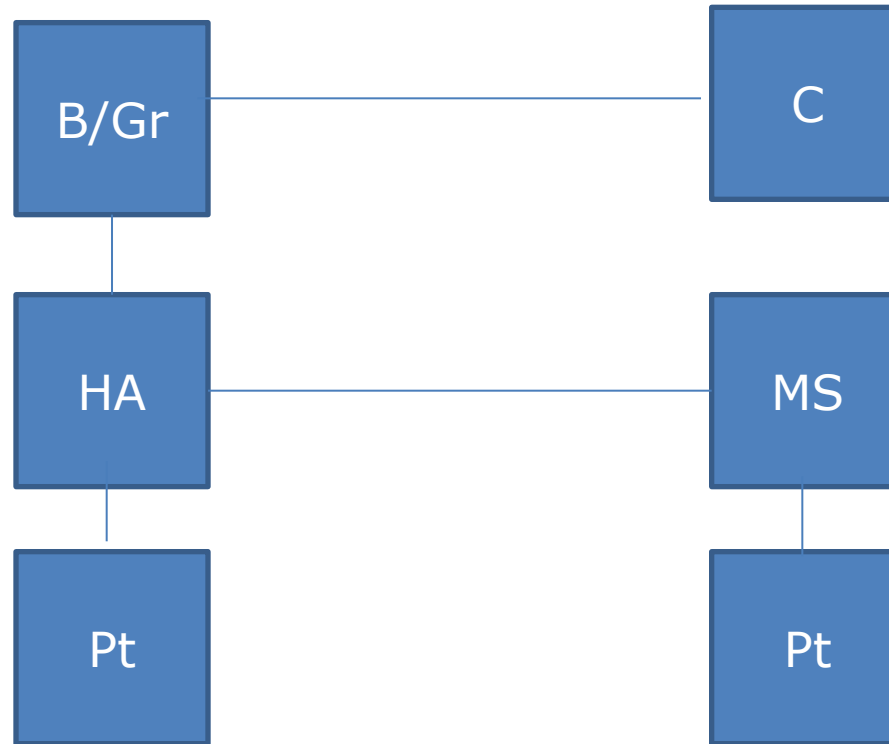
TeleConsultatie



TeleScreening



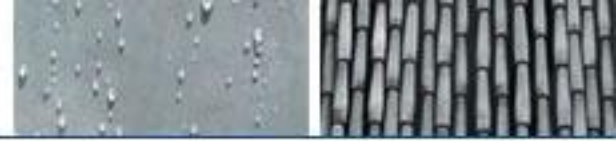
TeleMonitoring





Succes TeleMedicine

- Maatschappelijk business model
- Business model voor de stakeholders
- Vereisen/vergoeden van kwaliteit
 - Public relations, stimulering



Veel plezier !